



SMARTMENTS

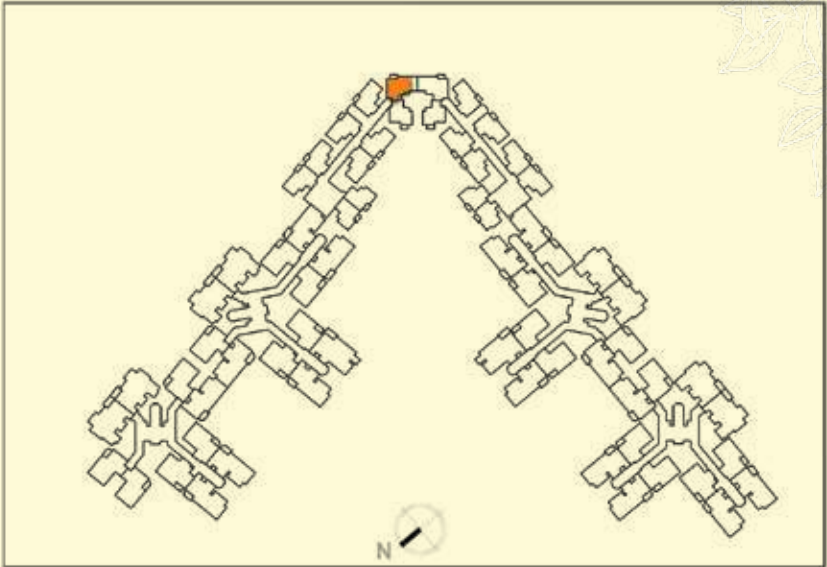
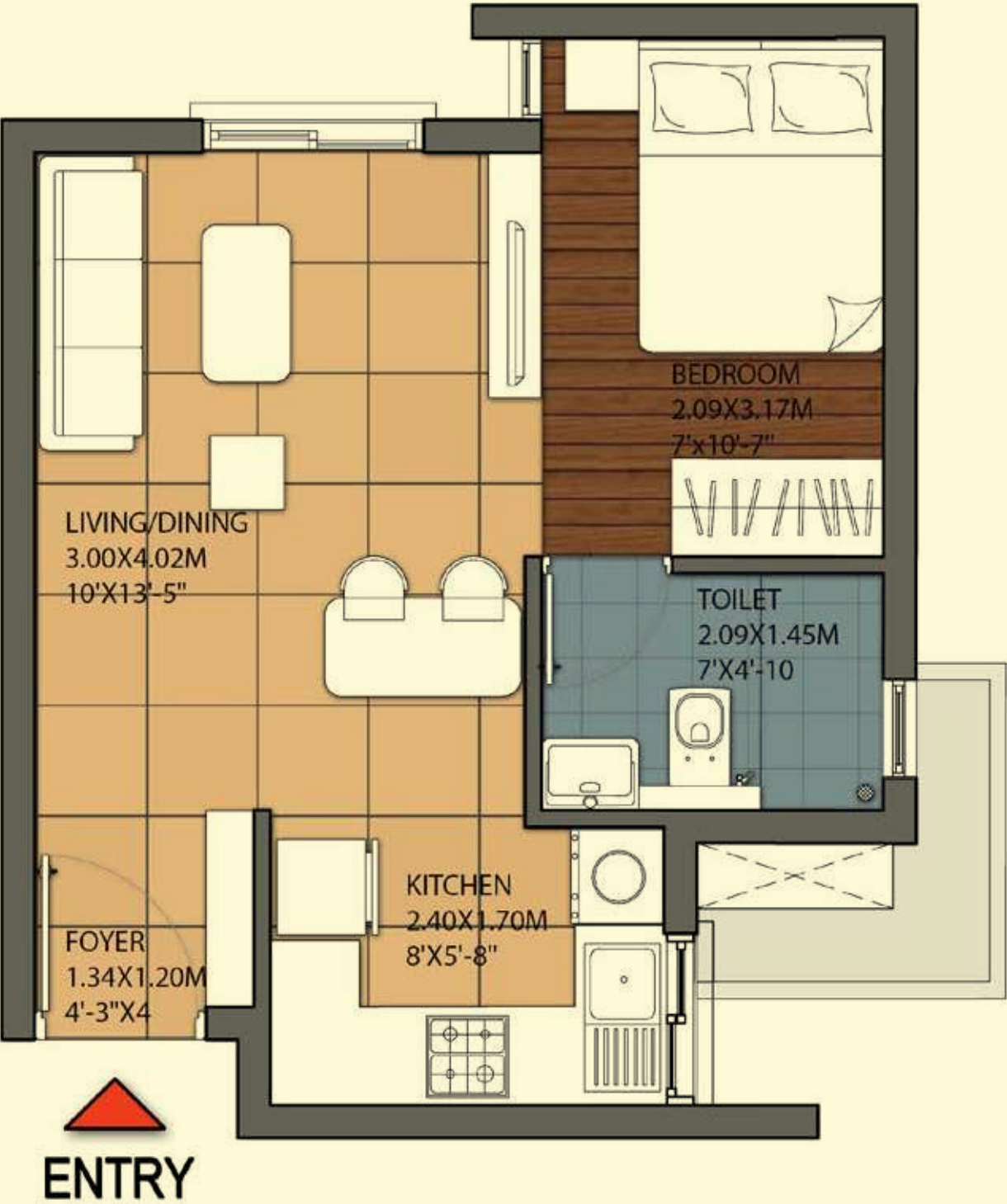
SMART HOMES FOR THE SMARTER YOU

RERA Reg.No: PRM/KA/RERA/1250/303/PR/220104/004626 • Details available at www.rera.karnataka.gov.in

IVORY
— at —

BRIGADE
ORCHARDS
Near KIADB, Devanahalli

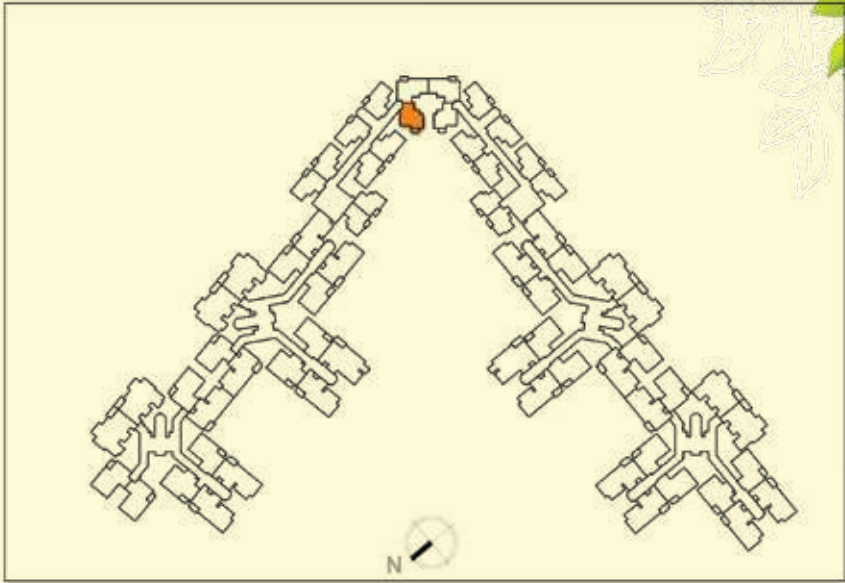
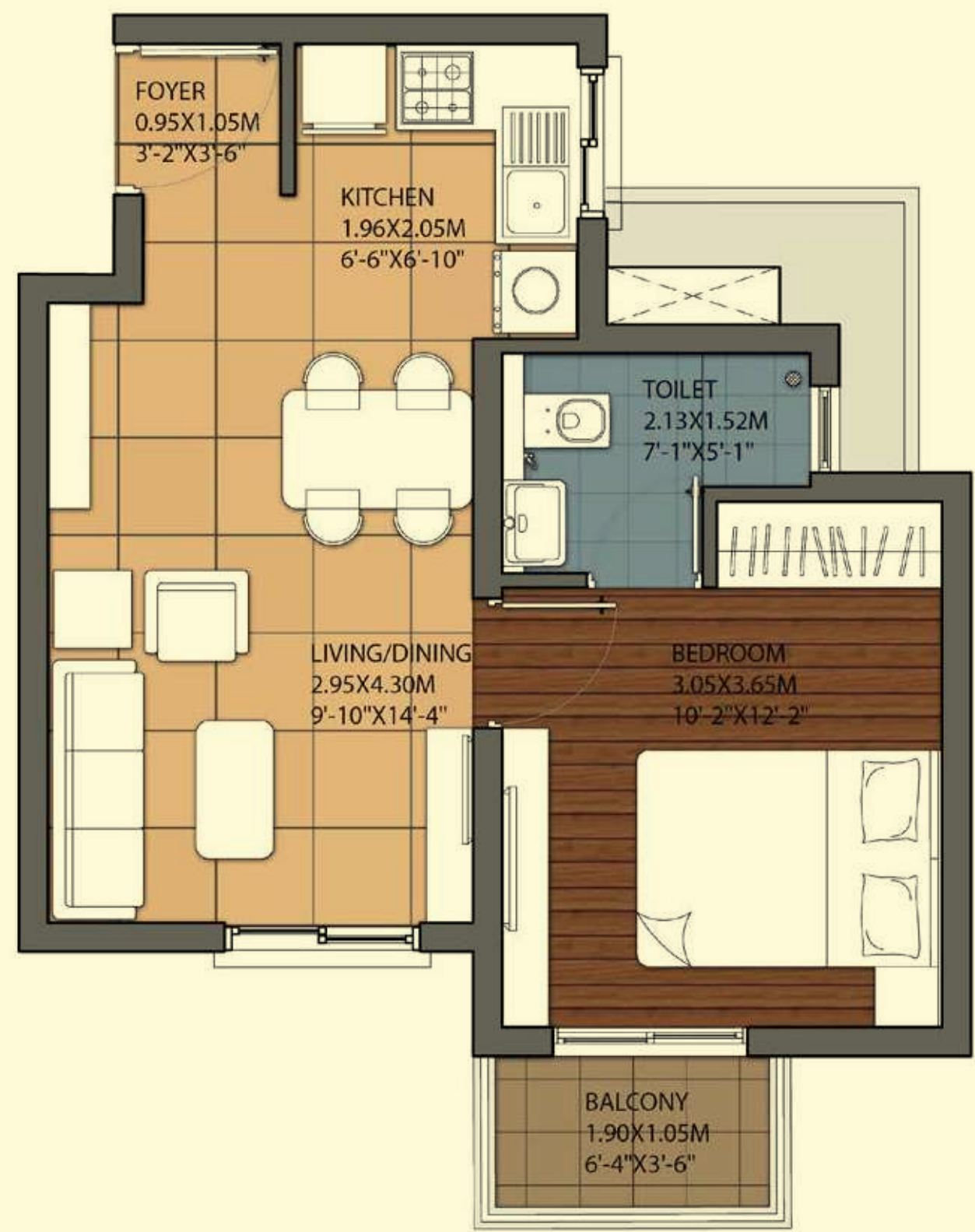
STUDIO UNIT



SUPER BUILT-UP AREA
46.87 Sq.m (505 Sq.ft.)
UNIT CARPET AREA
28.47 Sq.m (306 Sq.ft.)
UNIT DISTRIBUTION BLOCK-I
0027-0227

The information depicted herein viz., master plans, floor plans, furniture layout, fittings, illustrations, specifications, designs, dimensions, rendered views, colours, amenities and facilities etc., are subject to change without notifications as may be required by the relevant authorities or the developer's architect, and cannot form part of an offer or contract. Whilst every care is taken in providing this information, the Developer cannot be held liable for variations. All illustrations and pictures are artist's impression only. The information are subject to variations, additions, deletions, substitutions and modifications as may be recommended by the company's architect and/or the relevant approving authorities. The Developer is wholly exempt from any liability on account of any claim in this regard. (1 square metre = 10.764 square feet), E & OE. All dimensions and calculations are done in metric system (M/Sq.m), and imperial system (Ft/Sq.ft) shown is for reference only. All dimensions indicated in the drawing are from unfinished surfaces, excluding plaster thickness and tile thickness.

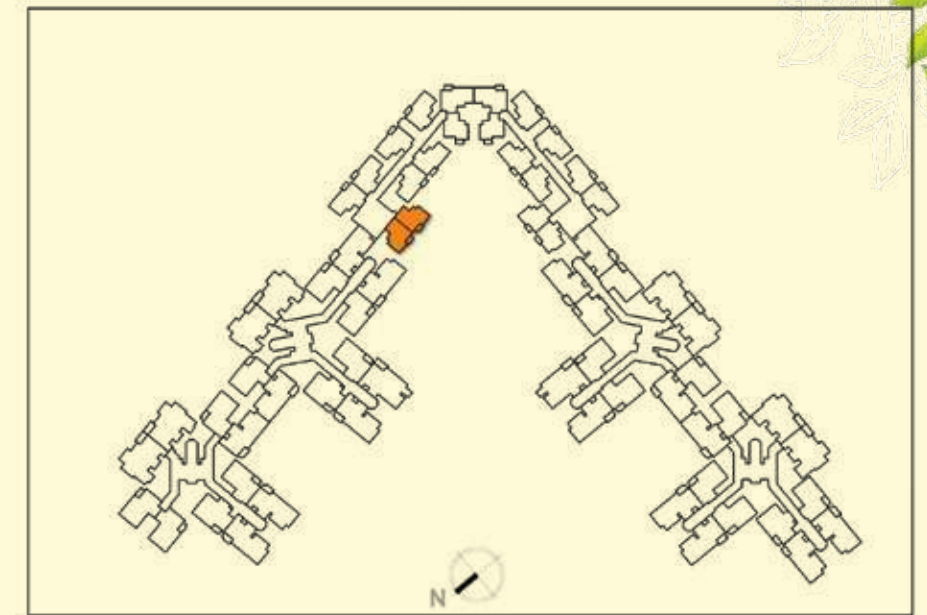
1 BHK UNIT (1 BEDROOM + 1 TOILET)



SUPER BUILT-UP AREA
56.94 Sq.m (613 Sq.ft.)
UNIT CARPET AREA
32.47 Sq.m (349.5 Sq.ft.)
BALCONY CARPET AREA
1.99 sq.m (21.42 Sq.ft.)
UNIT DISTRIBUTION BLOCK-I
0028-1328

The information depicted herein viz., master plans, floor plans, furniture layout, fittings, illustrations, specifications, designs, dimensions, rendered views, colours, amenities and facilities etc., are subject to change without notifications as may be required by the relevant authorities or the developer's architect, and cannot form part of an offer or contract. Whilst every care is taken in providing this information, the Developer cannot be held liable for variations. All illustrations and pictures are artist's impression only. The information are subject to variations, additions, deletions, substitutions and modifications as may be recommended by the company's architect and/or the relevant approving authorities. The Developer is wholly exempt from any liability on account of any claim in this regard. (1 square metre = 10.764 square feet). E & OE. All dimensions and calculations are done in metric system (M/Sq.m), and imperial system (Ft/Sq.ft) shown is for reference only. All dimensions indicated in the drawing are from unfinished surfaces, excluding plaster thickness and tile thickness.

1 BHK UNIT (1 BEDROOM + 1 TOILET)



SUPER BUILT-UP AREA

57.96 Sq.m (624 Sq.ft.)

UNIT CARPET AREA

33.71 Sq.m (362.85 Sq.ft.)

BALCONY CARPET AREA

1.99 sq.m (21.42 Sq.ft.)

UNIT DISTRIBUTION BLOCK-I

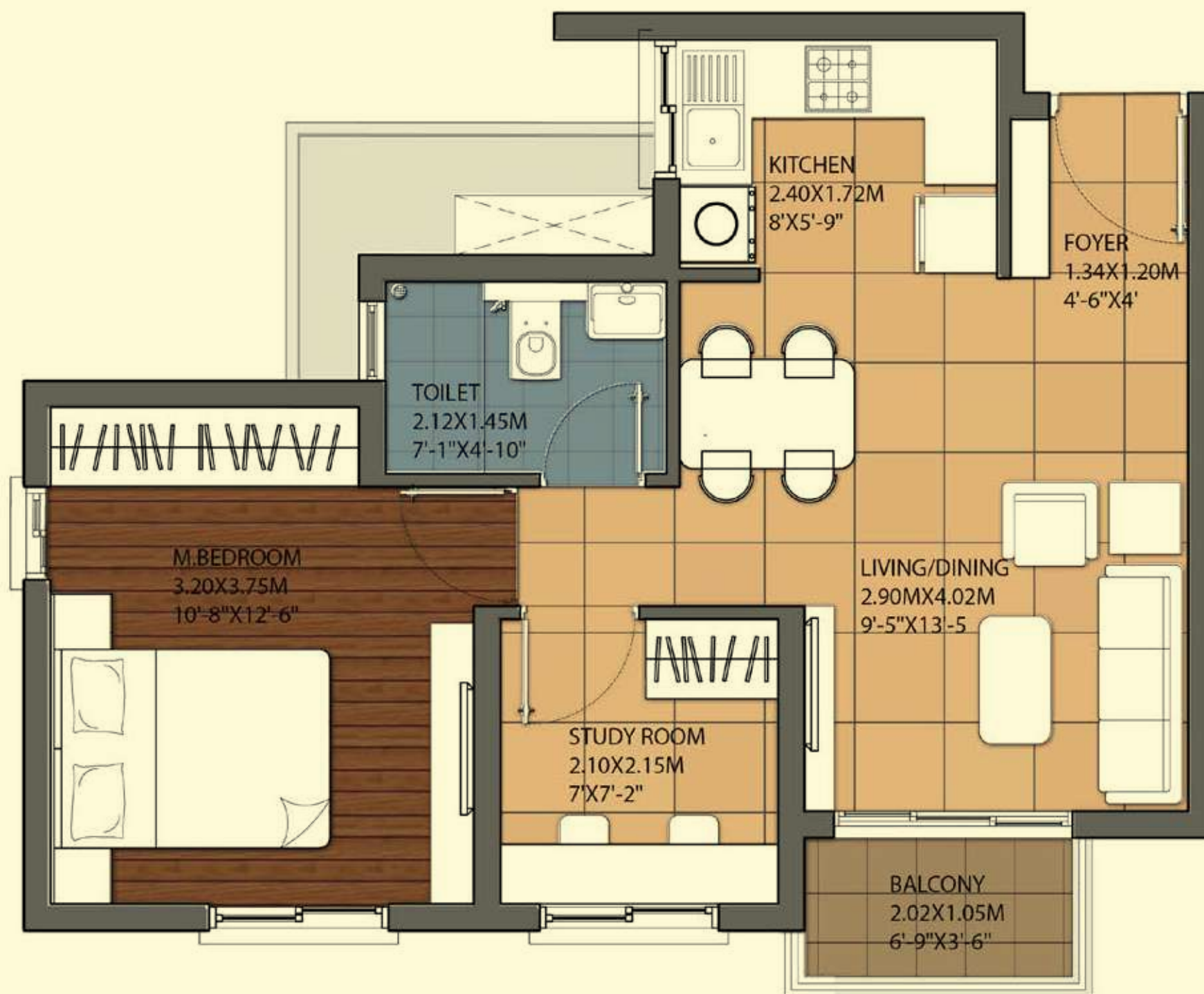
0031-1431, 0032-1432

The information depicted herein viz., master plans, floor plans, furniture layout, fittings, illustrations, specifications, designs, dimensions, rendered views, colours, amenities and facilities etc., are subject to change without notifications as may be required by the relevant authorities or the developer's architect, and cannot form part of an offer or contract. Whilst every care is taken in providing this information, the Developer cannot be held liable for variations. All illustrations and pictures are artist's impression only. The information are subject to variations, additions, deletions, substitutions and modifications as may be recommended by the company's architect and/or the relevant approving authorities. The Developer is wholly exempt from any liability on account of any claim in this regard. (1 square metre = 10.764 square feet), E & OE. All dimensions and calculations are done in metric system (M/Sq.m), and imperial system (Ft/Sq.ft) shown is for reference only. All dimensions indicated in the drawing are from unfinished surfaces, excluding plaster thickness and tile thickness.

IVORY
at

BRIGADE
ORCHARDS

1.5 BHK UNIT (1 BEDROOM + 1 STUDY + 1 TOILET)



SUPER BUILT-UP AREA

70.97 Sq.m (764 Sq.ft.)

UNIT CARPET AREA

42.00 Sq.m (452.08 Sq.ft.)

BALCONY CARPET AREA

2.12 sq.m (22.81 Sq.ft.)

UNIT DISTRIBUTION BLOCK-I

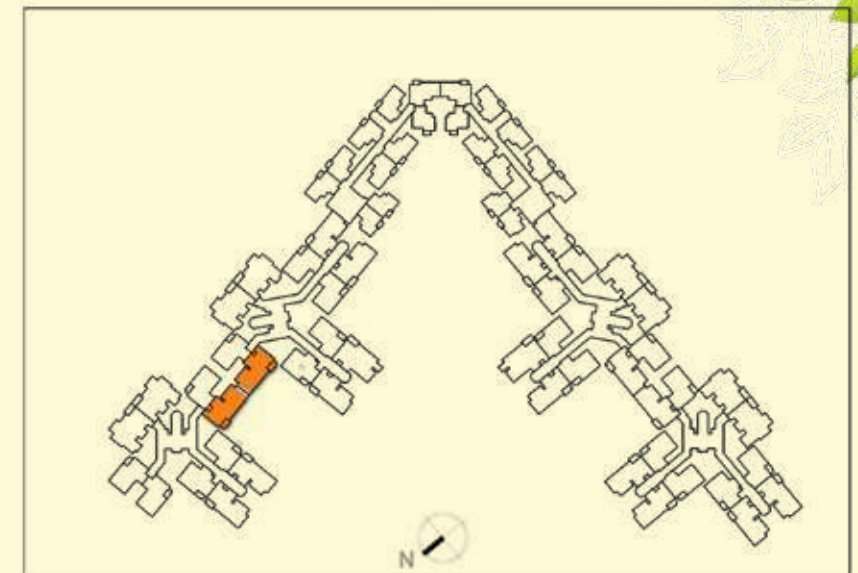
0223-1423, 0124-1424, 0025-1425, 0026-1426
0327-1127, 0029-1429, 0030-1430

The information depicted herein viz., master plans, floor plans, furniture layout, fittings, illustrations, specifications, designs, dimensions, rendered views, colours, amenities and facilities etc., are subject to change without notifications as may be required by the relevant authorities or the developer's architect, and cannot form part of an offer or contract. Whilst every care is taken in providing this information, the Developer cannot be held liable for variations. All illustrations and pictures are artist's impression only. The information are subject to variations, additions, deletions, substitutions and modifications as may be recommended by the company's architect and/or the relevant approving authorities. The Developer is wholly exempt from any liability on account of any claim in this regard. (1 square metre = 10.764 square feet). E & OE. All dimensions and calculations are done in metric system (M/Sq.m), and imperial system (Ft/Sq.ft) shown is for reference only. All dimensions indicated in the drawing are from unfinished surfaces, excluding plaster thickness and tile thickness.

IVORY
at

BRIGADE
ORCHARDS

2 BHK UNIT (2 BEDROOM + 2 TOILET)



SUPER BUILT-UP AREA

81.59 Sq.m (878 Sq.ft.)

UNIT CARPET AREA

51.36 Sq.m (552.83 Sq.ft.)

BALCONY CARPET AREA

3.77 sq.m (40.58 Sq.ft.)

UNIT DISTRIBUTION

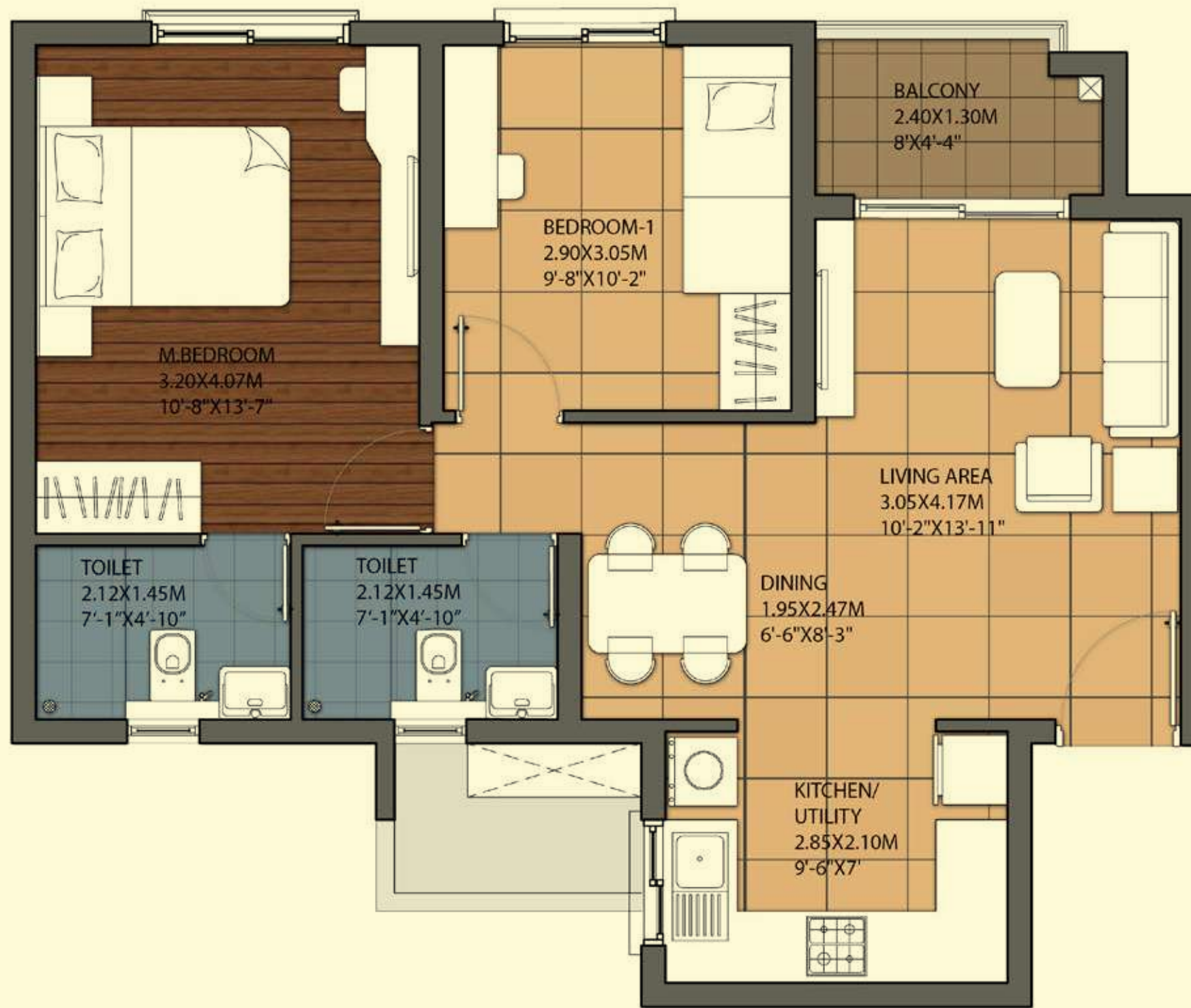
BLOCK-G	BLOCK-H
0006	0015

The information depicted herein viz., master plans, floor plans, furniture layout, fittings, illustrations, specifications, designs, dimensions, rendered views, colours, amenities and facilities etc., are subject to change without notifications as may be required by the relevant authorities or the developer's architect, and cannot form part of an offer or contract. Whilst every care is taken in providing this information, the Developer cannot be held liable for variations. All illustrations and pictures are artist's impression only. The information are subject to variations, additions, deletions, substitutions and modifications as may be recommended by the company's architect and/or the relevant approving authorities. The Developer is wholly exempt from any liability on account of any claim in this regard. (1 square metre = 10.764 square feet). E & OE. All dimensions and calculations are done in metric system (M/Sq.m), and imperial system (Ft/Sq.ft) shown is for reference only. All dimensions indicated in the drawing are from unfinished surfaces, excluding plaster thickness and tile thickness.

IVORY
at

BRIGADE
ORCHARDS

2 BHK UNIT (2 BEDROOM + 2 TOILET)



SUPER BUILT-UP AREA

83.83 Sq.m (902 Sq.ft.)

UNIT CARPET AREA

55.32 Sq.m (595.45 Sq.ft.)

BALCONY CARPET AREA

2.89 sq.m (31.10 Sq.ft.)

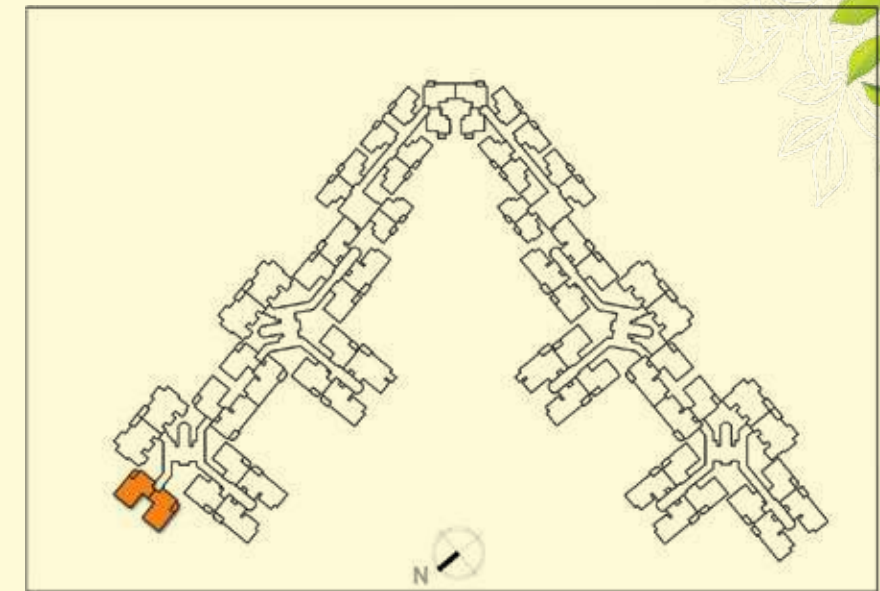
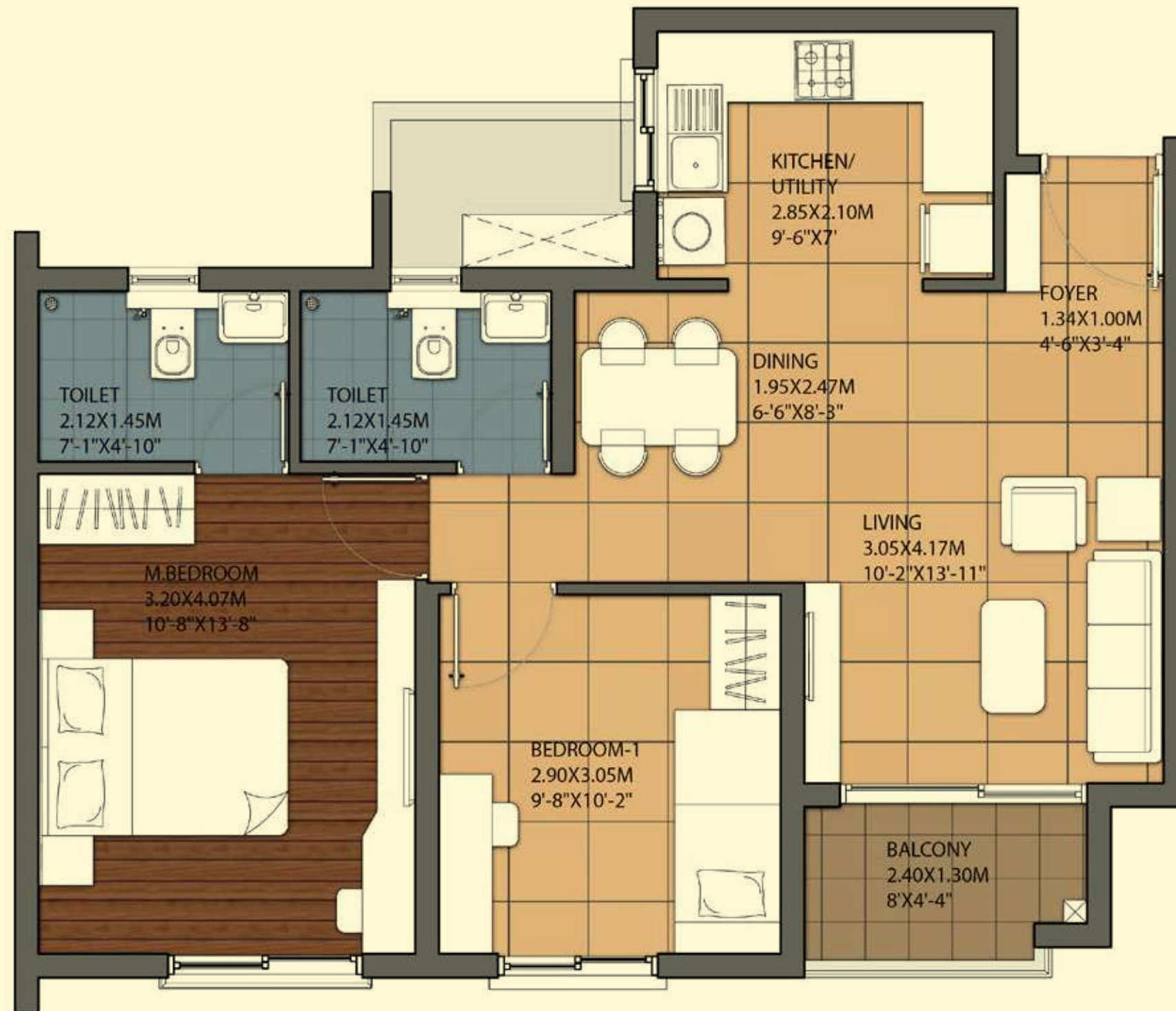
UNIT DISTRIBUTION BLOCK-H

0216-1416

The information depicted herein viz., master plans, floor plans, furniture layout, fittings, illustrations, specifications, designs, dimensions, rendered views, colours, amenities and facilities etc., are subject to change without notifications as may be required by the relevant authorities or the developer's architect, and cannot form part of an offer or contract. Whilst every care is taken in providing this information, the Developer cannot be held liable for variations. All illustrations and pictures are artist's impression only. The information are subject to variations, additions, deletions, substitutions and modifications as may be recommended by the company's architect and/or the relevant approving authorities. The Developer is wholly exempt from any liability on account of any claim in this regard. (1 square metre = 10.764 square feet). E & OE. All dimensions and calculations are done in metric system (M/Sq.m), and imperial system (Ft/Sq.ft) shown is for reference only. All dimensions indicated in the drawing are from unfinished surfaces, excluding plaster thickness and tile thickness.

IVORY
at
BRIGADE
ORCHARDS

2 BHK UNIT (2 BEDROOM + 2 TOILET)



SUPER BUILT-UP AREA

85.58 Sq.m (921 Sq.ft.)

UNIT CARPET AREA

56.64 Sq.m (609.6 Sq.ft.)

BALCONY CARPET AREA

2.90 sq.m (31.21 Sq.ft.)

UNIT DISTRIBUTION BLOCK-G

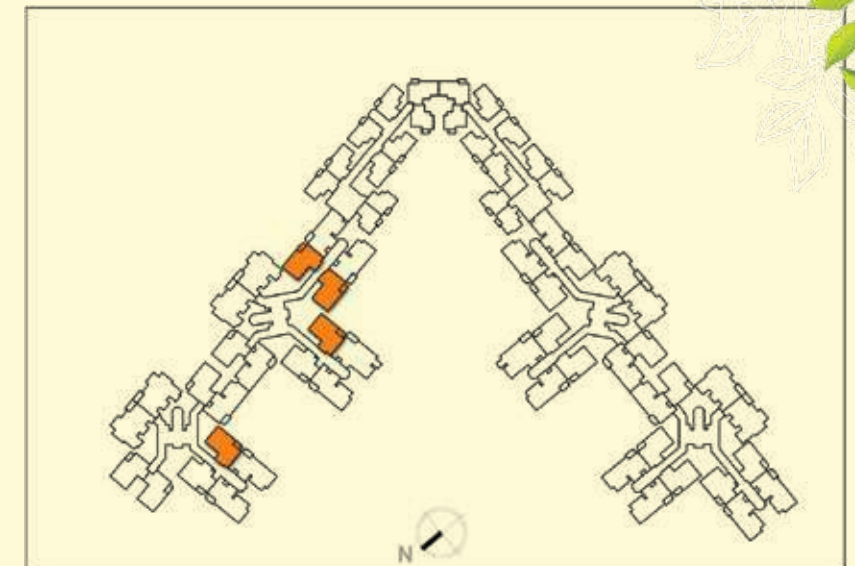
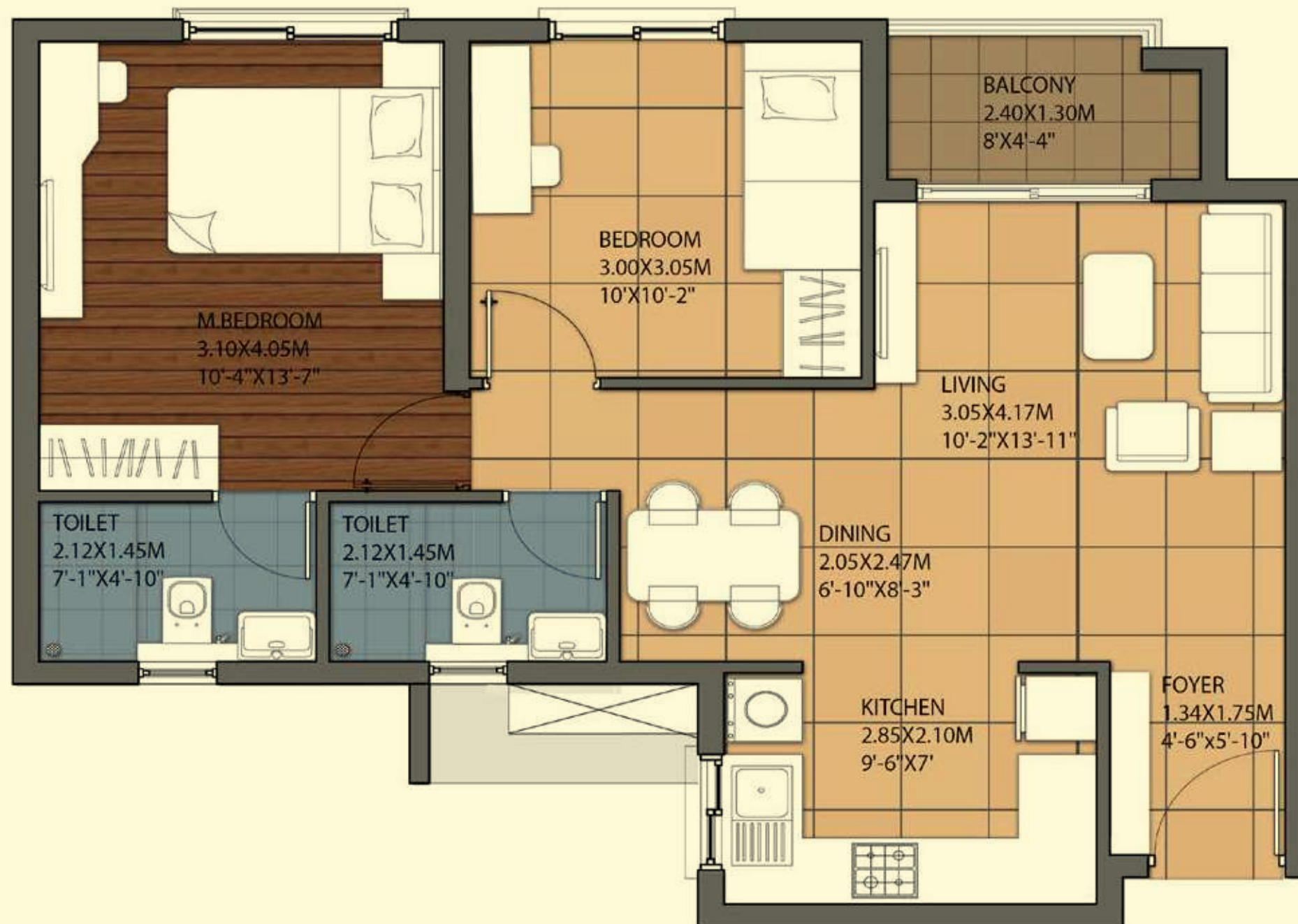
0001-1401, 0002-1402

The information depicted herein viz., master plans, floor plans, furniture layout, fittings, illustrations, specifications, designs, dimensions, rendered views, colours, amenities and facilities etc., are subject to change without notifications as may be required by the relevant authorities or the developer's architect, and cannot form part of an offer or contract. Whilst every care is taken in providing this information, the Developer cannot be held liable for variations. All illustrations and pictures are artist's impression only. The information are subject to variations, additions, deletions, substitutions and modifications as may be recommended by the company's architect and/or the relevant approving authorities. The Developer is wholly exempt from any liability on account of any claim in this regard. (1 square metre = 10.764 square feet), E & OE. All dimensions and calculations are done in metric system (M/Sq.m), and imperial system (Ft/Sq.ft) shown is for reference only. All dimensions indicated in the drawing are from unfinished surfaces, excluding plaster thickness and tile thickness.

IVORY
at

BRIGADE
ORCHARDS

2 BHK UNIT (2 BEDROOM + 2 TOILET)



SUPER BUILT-UP AREA

86.47 Sq.m (931 Sq.ft.)

UNIT CARPET AREA

57.81 Sq.m (622.26 Sq.ft.)

BALCONY CARPET AREA

2.90 sq.m (31.21 Sq.ft.)

UNIT DISTRIBUTION

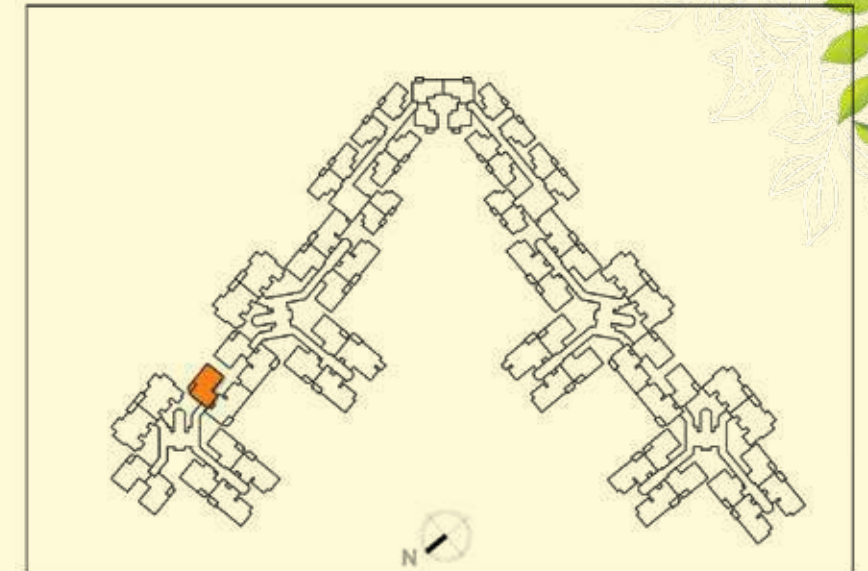
BLOCK-G	BLOCK-H
007-1307	0011-1211, 0019-1419, 0022-1422

The information depicted herein viz., master plans, floor plans, furniture layout, fittings, illustrations, specifications, designs, dimensions, rendered views, colours, amenities and facilities etc., are subject to change without notifications as may be required by the relevant authorities or the developer's architect, and cannot form part of an offer or contract. Whilst every care is taken in providing this information, the Developer cannot be held liable for variations. All illustrations and pictures are artist's impression only. The information are subject to variations, additions, deletions, substitutions and modifications as may be recommended by the company's architect and/or the relevant approving authorities. The Developer is wholly exempt from any liability on account of any claim in this regard. (1 square metre = 10.764 square feet), E & OE. All dimensions and calculations are done in metric system (M/Sq.m), and imperial system (Ft/Sq.ft) shown is for reference only. All dimensions indicated in the drawing are from unfinished surfaces, excluding plaster thickness and tile thickness.

IVORY
at

BRIGADE
ORCHARDS

2 BHK UNIT (2 BEDROOM + 2 TOILET)



SUPER BUILT-UP AREA

88.04 Sq.m (948 Sq.ft.)

UNIT CARPET AREA

58.46 Sq.m (629.26 Sq.ft.)

BALCONY CARPET AREA

2.89 sq.m (31.10 Sq.ft.)

UNIT DISTRIBUTION BLOCK-G

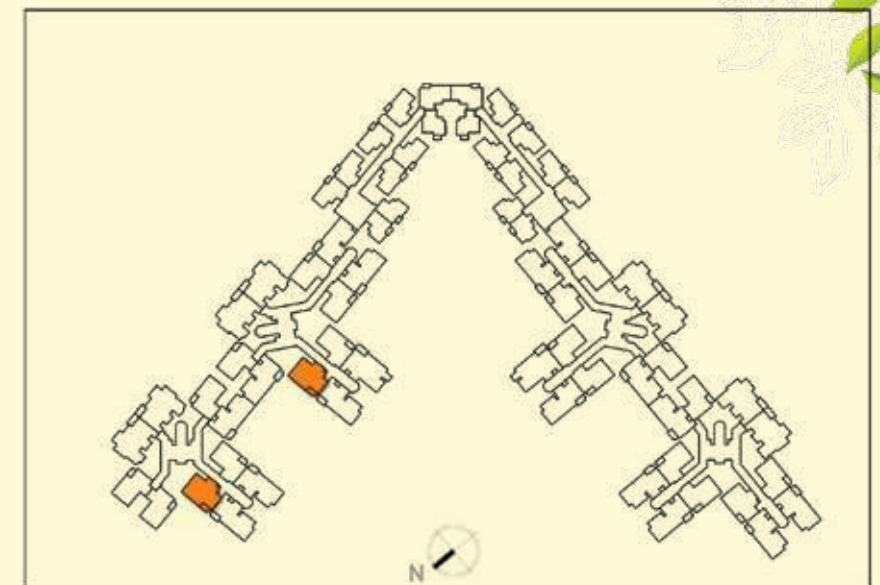
0205-1405

The information depicted herein viz., master plans, floor plans, furniture layout, fittings, illustrations, specifications, designs, dimensions, rendered views, colours, amenities and facilities etc., are subject to change without notifications as may be required by the relevant authorities or the developer's architect, and cannot form part of an offer or contract. Whilst every care is taken in providing this information, the Developer cannot be held liable for variations. All illustrations and pictures are artist's impression only. The information are subject to variations, additions, deletions, substitutions and modifications as may be recommended by the company's architect and/or the relevant approving authorities. The Developer is wholly exempt from any liability on account of any claim in this regard. (1 square metre = 10.764 square feet). E & OE. All dimensions and calculations are done in metric system (M/Sq.m), and imperial system (Ft/Sq.ft) shown is for reference only. All dimensions indicated in the drawing are from unfinished surfaces, excluding plaster thickness and tile thickness.

IVORY
at

BRIGADE
ORCHARDS

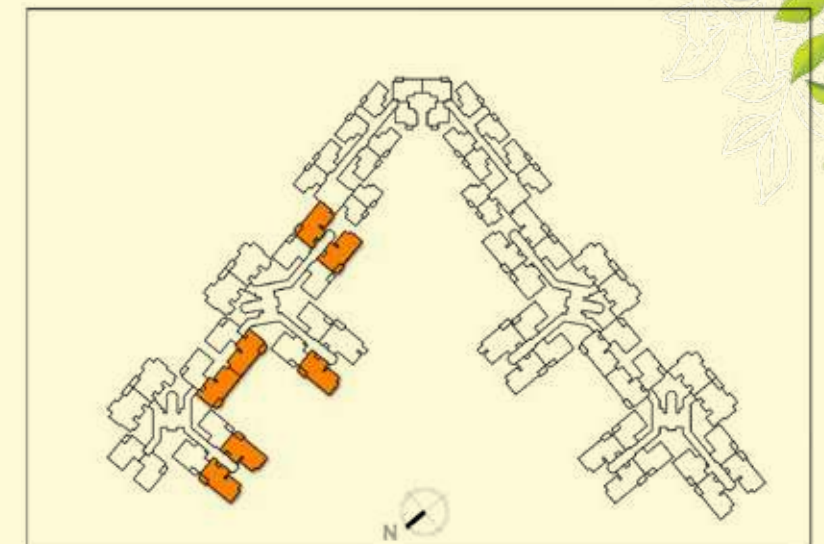
2 BHK UNIT (2 BEDROOM + 2 TOILET)



SUPER BUILT-UP AREA	
88.04 Sq.m (948 Sq.ft.)	
UNIT CARPET AREA	
58.46 Sq.m (629.25 Sq.ft.)	
BALCONY CARPET AREA	
2.89 sq.m (31.10 Sq.ft.)	
UNIT DISTRIBUTION	
BLOCK-G	BLOCK-H
0010-1310	0014-1214

The information depicted herein viz., master plans, floor plans, furniture layout, fittings, illustrations, specifications, designs, dimensions, rendered views, colours, amenities and facilities etc., are subject to change without notifications as may be required by the relevant authorities or the developer's architect, and cannot form part of an offer or contract. Whilst every care is taken in providing this information, the Developer cannot be held liable for variations. All illustrations and pictures are artist's impression only. The information are subject to variations, additions, deletions, substitutions and modifications as may be recommended by the company's architect and/or the relevant approving authorities. The Developer is wholly exempt from any liability on account of any claim in this regard. (1 square metre = 10.764 square feet). E & OE. All dimensions and calculations are done in metric system (M/Sq.m), and imperial system (Ft/Sq.ft) shown is for reference only. All dimensions indicated in the drawing are from unfinished surfaces, excluding plaster thickness and tile thickness.

3 BHK UNIT (3 BEDROOM + 2 TOILET)



SUPER BUILT-UP AREA

105.12 Sq.m (1131 Sq.ft.)

UNIT CARPET AREA

69.40 Sq.m (747 Sq.ft.)

BALCONY CARPET AREA

3.77 sq.m (40.57 Sq.ft.)

UNIT DISTRIBUTION

BLOCK-G	BLOCK-H
0008-1308, 0009-1309 0106-1406, 0115-1415	0013-1213, 0020-1420 0021-1421

The information depicted herein viz., master plans, floor plans, furniture layout, fittings, illustrations, specifications, designs, dimensions, rendered views, colours, amenities and facilities etc., are subject to change without notifications as may be required by the relevant authorities or the developer's architect, and cannot form part of an offer or contract. Whilst every care is taken in providing this information, the Developer cannot be held liable for variations. All illustrations and pictures are artist's impression only. The information are subject to variations, additions, deletions, substitutions and modifications as may be recommended by the company's architect and/or the relevant approving authorities. The Developer is wholly exempt from any liability on account of any claim in this regard. (1 square metre = 10.764 square feet), E & OE. All dimensions and calculations are done in metric system (M/Sq.m), and imperial system (Ft/Sq.ft) shown is for reference only. All dimensions indicated in the drawing are from unfinished surfaces, excluding plaster thickness and tile thickness.

IVORY
at

BRIGADE
ORCHARDS

3 BHK UNIT (3 BEDROOM + 3 TOILET)



SUPER BUILT-UP AREA

121.68 Sq.m (1310 Sq.ft.)

UNIT CARPET AREA

80.33 Sq.m (864.66 Sq.ft.)

BALCONY CARPET AREA

4.88 sq.m (52.52 Sq.ft.)

UNIT DISTRIBUTION BLOCK-H

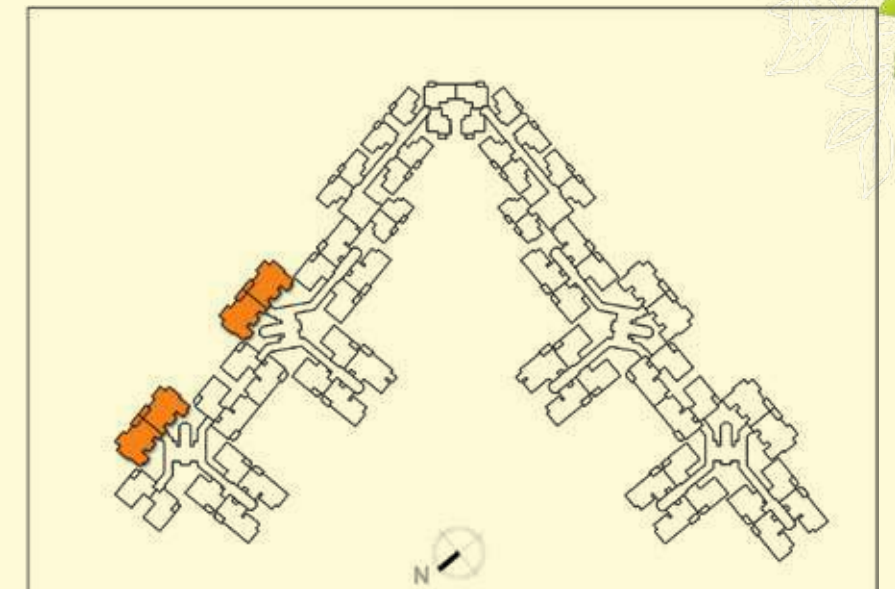
0012-1212

The information depicted herein viz., master plans, floor plans, furniture layout, fittings, illustrations, specifications, designs, dimensions, rendered views, colours, amenities and facilities etc., are subject to change without notifications as may be required by the relevant authorities or the developer's architect, and cannot form part of an offer or contract. Whilst every care is taken in providing this information, the Developer cannot be held liable for variations. All illustrations and pictures are artist's impression only. The information are subject to variations, additions, deletions, substitutions and modifications as may be recommended by the company's architect and/or the relevant approving authorities. The Developer is wholly exempt from any liability on account of any claim in this regard. (1 square metre = 10.764 square feet), E & OE. All dimensions and calculations are done in metric system (M/Sq.m), and imperial system (Ft/Sq.ft) shown is for reference only. All dimensions indicated in the drawing are from unfinished surfaces, excluding plaster thickness and tile thickness.

IVORY
at

BRIGADE
ORCHARDS

3 BHK UNIT (3 BEDROOM + 3 TOILET)



SUPER BUILT-UP AREA

123.42 Sq.m (1329 Sq.ft.)

UNIT CARPET AREA

81.82 Sq.m (880.70 Sq.ft.)

BALCONY CARPET AREA

4.88 sq.m (52.52 Sq.ft.)

UNIT DISTRIBUTION

BLOCK-G

0003-1403
0004-1404

BLOCK-H

0017-1417
0018-1418

The information depicted herein viz., master plans, floor plans, furniture layout, fittings, illustrations, specifications, designs, dimensions, rendered views, colours, amenities and facilities etc., are subject to change without notifications as may be required by the relevant authorities or the developer's architect, and cannot form part of an offer or contract. Whilst every care is taken in providing this information, the Developer cannot be held liable for variations. All illustrations and pictures are artist's impression only. The information are subject to variations, additions, deletions, substitutions and modifications as may be recommended by the company's architect and/or the relevant approving authorities. The Developer is wholly exempt from any liability on account of any claim in this regard. (1 square metre = 10.764 square feet), E & OE. All dimensions and calculations are done in metric system (M/Sq.m), and imperial system (Ft/Sq.ft) shown is for reference only. All dimensions indicated in the drawing are from unfinished surfaces, excluding plaster thickness and tile thickness.

IVORY
at

BRIGADE
ORCHARDS

PICTURE PERFECT FRAMES OF A PICTURE PERFECT TOWNSHIP

(Shot by residents of Brigade Orchards)



BRIGADE

Building Positive Experiences

BrigadeGroup.com

Our Core Values



Celebrating



Awarded
11 years in a row



To **UPGRADE TO BRIGADE**, reach us on 1800 102 9977 • email: salesenquiry@brigadegroup.com

Visit us at Brigade Experience Lounge, Ground Level, World Trade Center, Brigade Gateway Campus, Dr. Rajkumar Road, Malleswaram-Rajajinagar, Bengaluru